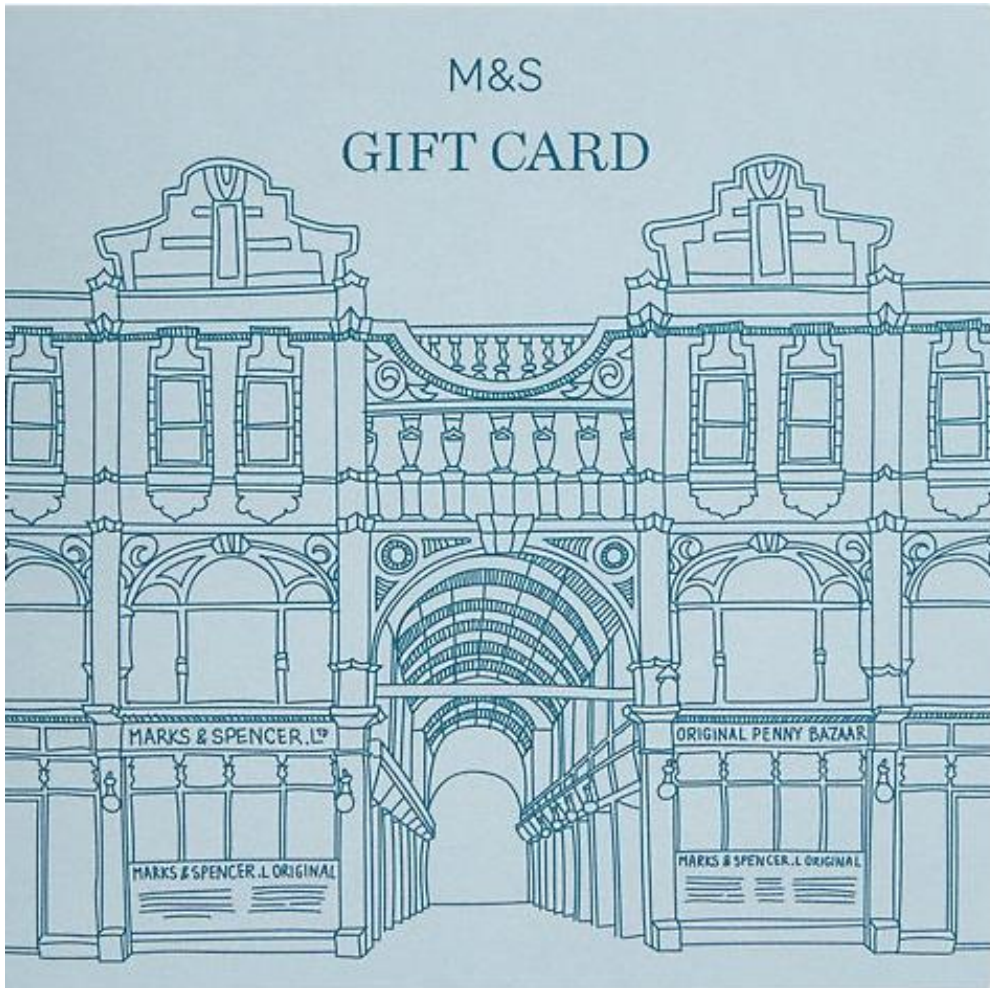


M&S ARCHIVE

Case Study: Archive-inspired gifting range



2022 Gifting range design



Leeds M&S Penny Bazaar, Cross Arcade 1909

M&S ARCHIVE

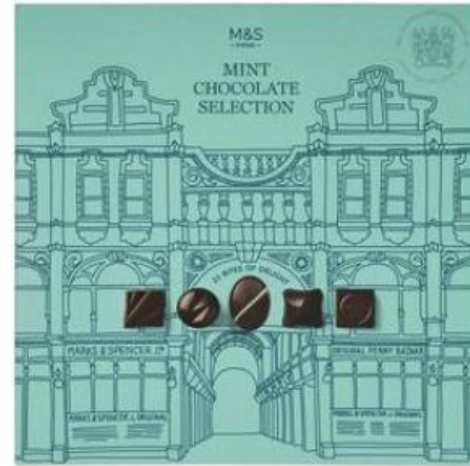


2022 Advent calendar



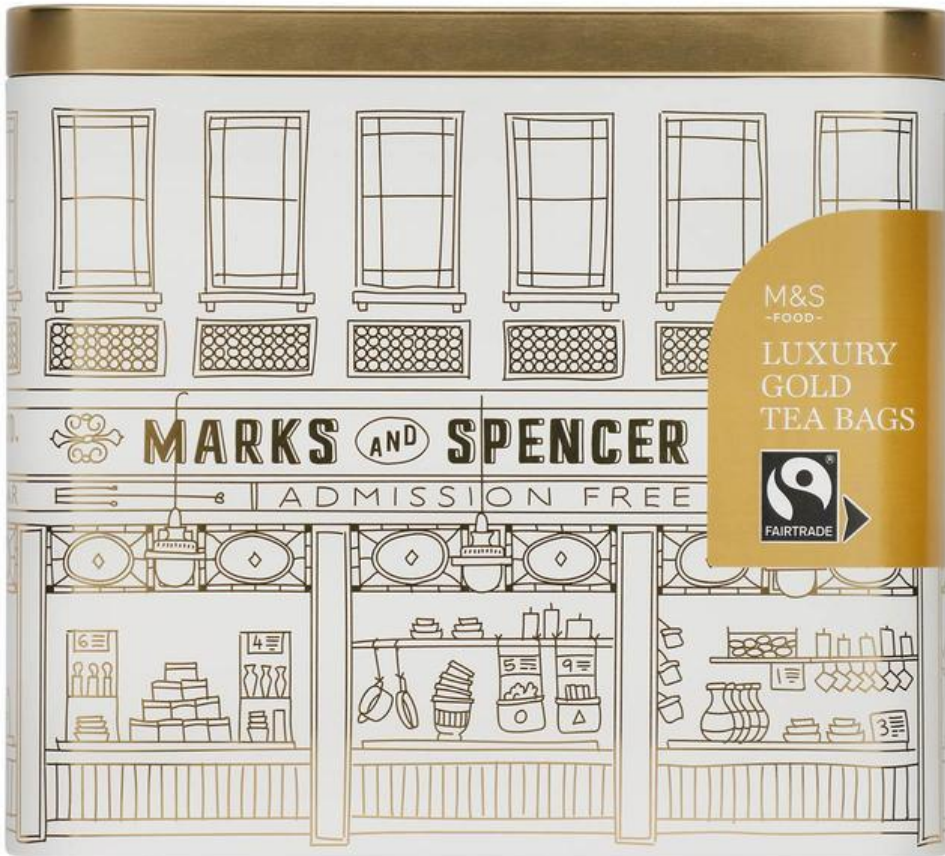
Hackney Store, 1930

M&S ARCHIVE



2022 Gifting range design

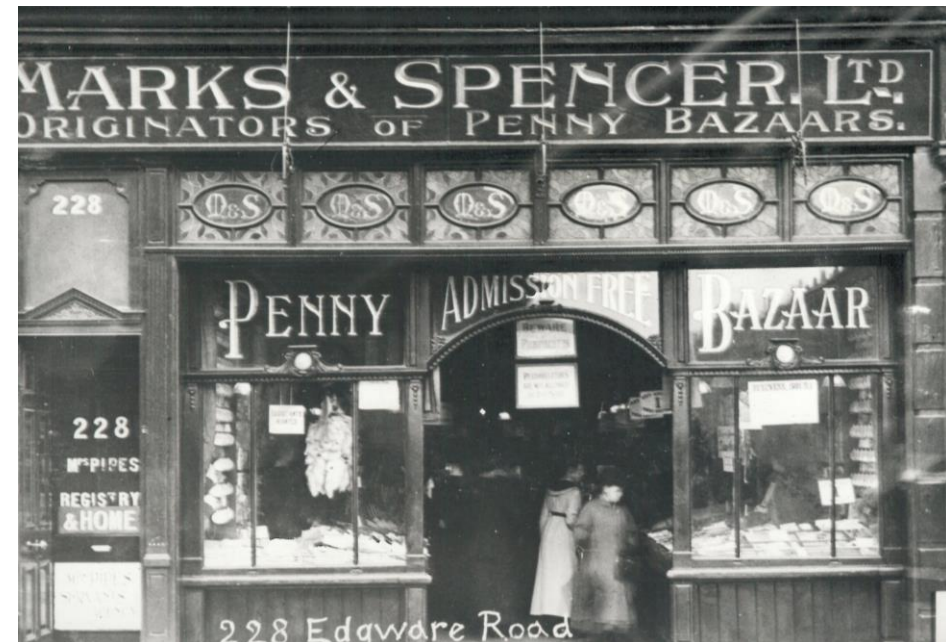
M&S ARCHIVE



Above: 2022 Tea bag gift tin



Top right: Grainger Market M&S Penny Bazaar, Newcastle upon Tyne, 1906



Bottom right: Edgware Road store, London, 1912